



www.cooled.com.tw  
www.cooled.com.sg

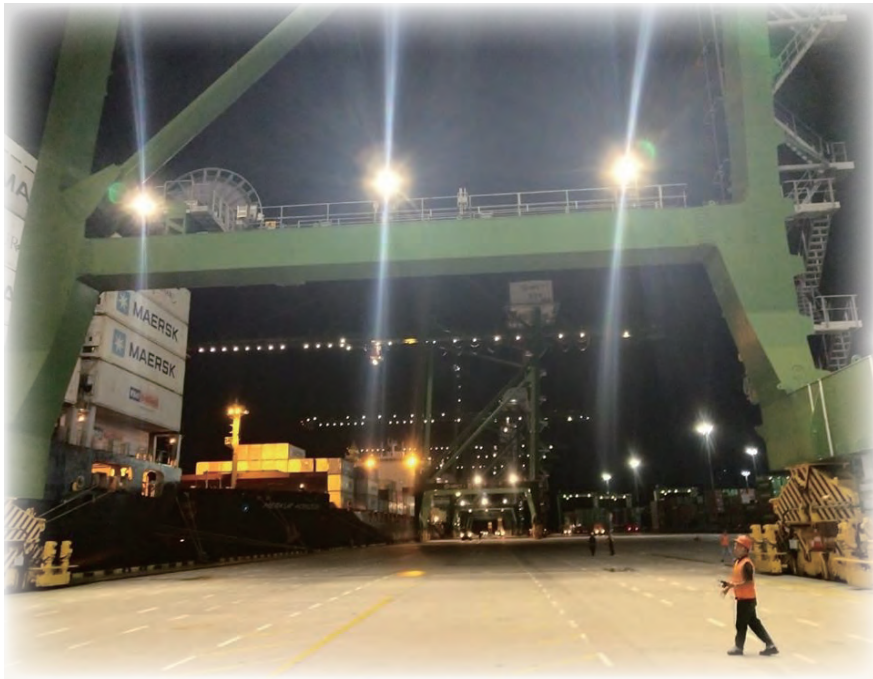


# LED High-mast Lighting

APPLICATIONS:  
Warehouse, Yard, Stadium, Parking Lot, Factory etc.



37000 lm (H3370)  
70000 lm (H3700)



# OUR PROJECTS

H3370 LED High-mast Lighting





# LED High-mast Lighting

Model : H3370

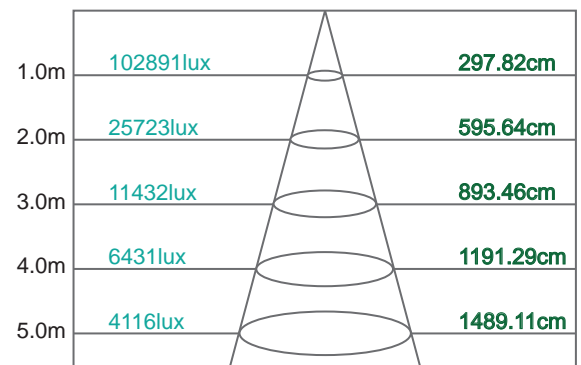


Part No.	H3370
Rated Lumen**	37000 lm(Measured value:37747.2 lm)
Rated Voltage	100~240, 50/60HZ
Power Factor	>0.95
Lighting Efficacy**	111.27 lm/W
Rated Power	330W
Beam Angle	25° / 45° / 60° / 90° / 100°
Color Temperature	5000K / 3000K
CRI	>80, R9>0
Dimension(±2mm)	Φ367x459(H)
Weight(±5%)	8855g

Note : \* X can be replaced by C:5000K/ W:3000K.

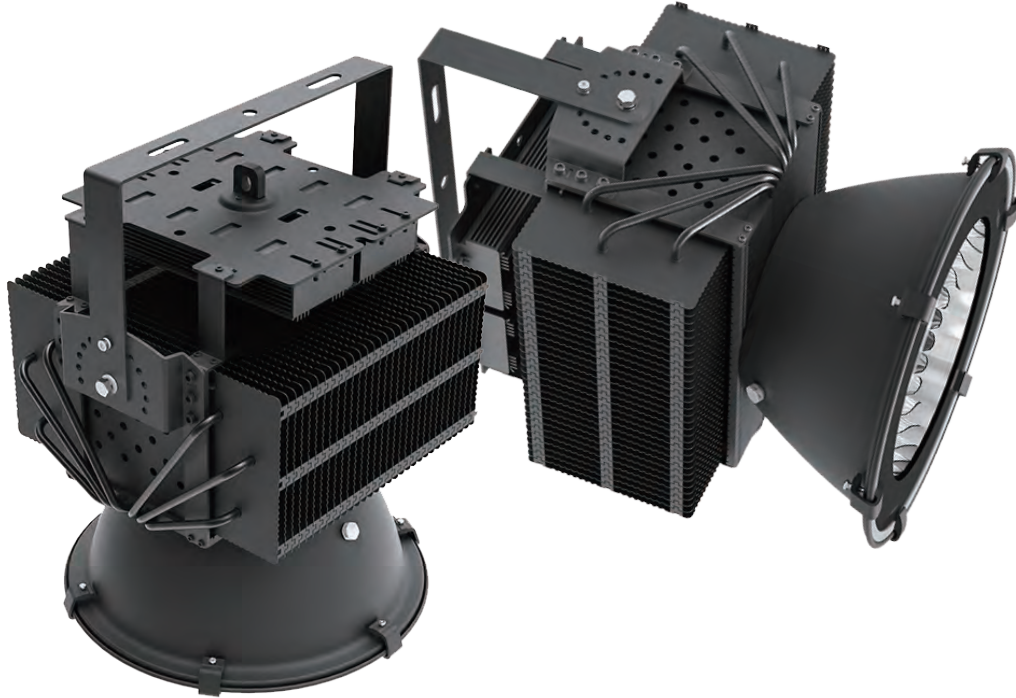
\*\*The value is measured at 5000K.

● Diagram for illumination distance (Cool White 5000K)



# LED High-mast Lighting

Model : H3700



Part No.	H3700
Rated Lumen**	70000 lm(Measured value:67983.6 lm)
Rated Voltage	100~240, 50/60HZ
Power Factor	>0.95
Lighting Efficacy**	114 lm/W
Rated Power	600W
Beam Angle	25° / 45° / 60° / 90° / 100°
Color Temperature	5000K / 3000K
CRI	>80, R9>0
Dimension(±2mm)	384(L)x374(W)x500(H)
Weight(±5%)	15Kg

Note : \* X can be replaced by C:5000K/ W:3000K.

\*\*The value is measured at 5000K.

● Diagram for illumination distance  
(Cool White 5000K)

